

TOPO AND SOIL MAPS – APPENDIX D

APPENDIX D

TOPO MAPS

TOPO MAPS

Using topography maps allows you to collect site information, identify if any streams are on the site, and the steepness etc. of the site you may be observing.

Defining and Mapping Your Watershed:

Defining the area which makes up your watershed is important because all land uses in a particular watershed affect the water quality of streams that drain the land. Since water runs downhill, the lay of the land determines the size of your watershed. By locating the area sloping to your stream you can determine what land practices may affect your stream's water quality.

In order to identify and map your watershed, or to locate your site on a map to identify streams, etc, topographic maps from your local office of the U.S. Geological Survey (USGS) can be used to map out your watershed's drainage pattern and help you to identify potential pollution problems.

These maps may be obtained at:

Georgia Geological Survey
19 Martin Luther King Jr. Drive
Maps and Publication Room 400
Atlanta, Georgia 30334
404-656-3214
(Office hours 10:00 am – 2:00 pm)
Maps can also be mailed upon request.

Types of Maps Available:

* US Geologic Survey (USGS) 7.5 minute topographic maps (1:24000, 1"=2000') - the ultimate in detail; also available from US Forest Service showing USFS property boundaries. These are recommended to use if a sub-watershed is being targeted for observation.

* USGS 30x60 minute topographic maps (1:100,000 metric, 1cm=1km) - good regional maps, derived from the 7.5 minute maps, available for Dalton, Toccoa, Cartersville, Commerce, Atlanta, etc.

Georgia Watersheds :: <http://www.gah2o.org/static/watersheds.pdf>

To learn how to delineate a topographic map, sign up for the Level I Adopt-A-Stream Training at 404-675-1636 or 1639.

(Source: Georgia Adopt-A-Stream, Getting Started, Level I, January 1995)

CONT'D



APPENDIX D

TOPO MAPS

TOPO MAPS CONT'D

Resources for USGS Topo Maps and Aerial Photos

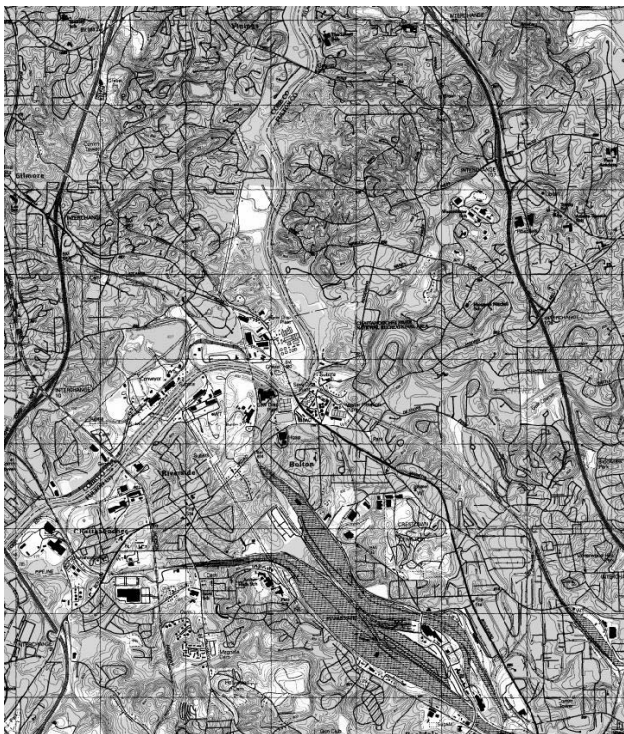
<http://www.digital-topo-maps.com/mapcard.shtml>

Unlimited online access to view, print, save, email and customize as many USGS topo maps and high resolution aerial photos as you want for anywhere in the United States for one full year. Cost: \$14.95 per year.

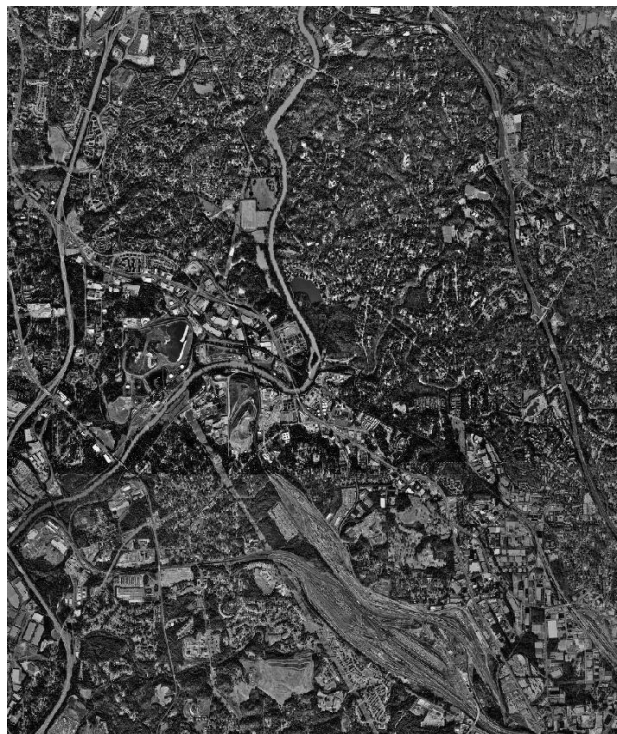
These easy-to-use tools will allow you to customize your maps and photos with text/ symbols, estimate GPS coordinates, mark waypoints, estimate areas / distances and email maps.

You can print matched map/photo pairs that will improve navigation and documentation.

Sample Topo Maps / Aerial Photos



Topo Map



Aerial Photo

SOIL MAPS

SOIL MAPS

Additional site information, including some streams and/or wetlands identification
http://soils.usda.gov/survey/online_surveys/georgia/

Or call your regional Natural Resources Conservation Service (NRCS) office - **Appendix I** ☞



Keeping Watch Over Our Waters