

**TECHNICAL RESOURCES****TECHNICAL RESOURCES****DEFINING + MAPPING YOUR WATERSHED**

## DEFINING + MAPPING

Defining the area which makes up your watershed is important because all land uses in a particular watershed affect the water quality of streams that drain the land. Since water runs downhill, the lay of the land determines the size of your watershed. By locating the area sloping to your stream you can determine what land practices may affect your stream's water quality.

Georgia Watersheds

<http://www.gah2o.org/static/watersheds.pdf>

In order to identify and map your watershed, topographic maps from your local office of the U.S. Geological Survey (USGS) can be used to map out your watershed's drainage pattern and help you to identify potential pollution problems.

These maps may be obtained at: Georgia Geological Survey  
19 Martin Luther King Jr. Drive  
Maps and Publication Room 400  
Atlanta, Georgia 30334  
404-656-3214  
(open from 10:00 am – 2:00 pm)

To learn how to delineate a topographic map, sign up for the Level I Adopt-A-Stream Training at 404-675-1636 or 1639.

(Source: Georgia Adopt-A-Stream, Getting Started, Level I, January 1995)

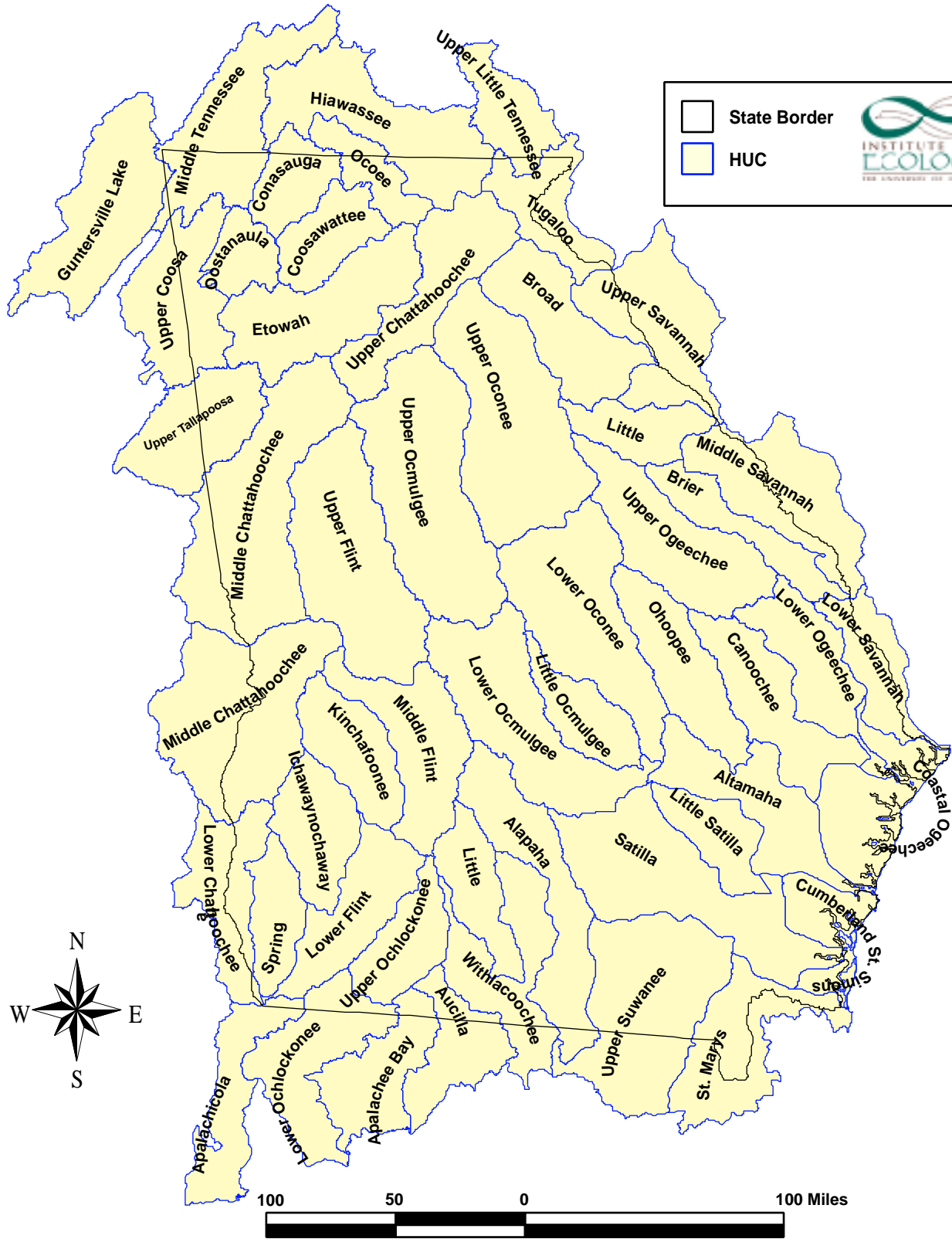
**Map Resources**

## MAP RESOURCES

- \* US Geologic Survey (USGS) 7.5 minute topographic maps (1:24000, 1"=2000') - the ultimate in detail; also available from US Forest Service showing USFS property boundaries.
- \* USGS 30x60 minute topographic maps (1:100,000 metric, 1cm=1km) - good regional maps, derived from the 7.5 minute maps, available for Dalton, Toccoa, Cartersville, Commerce, Atlanta, etc.
- \* Topo! by Wildflower Productions (415/558-8700 or [www.topo.com](http://www.topo.com)) - the USGS 7.5 minute topo maps and more (1:12000, 1:24000, 1:63360, 1:250000, and 1:633600) on CD-ROM for Atlanta and north Georgia (does not include areas south of Atlanta).
- \* Maptech Terrain Navigator (800/627-7236 or [www.maptech.com](http://www.maptech.com)) - the USGS 7.5 minute and 30x60 minute topo maps on CD-ROM. Will have all of Georgia available by mid-year 1999.
- \* Chattahoochee River map (Helen to Atlanta) by Atlantic Mapping (770/426-5768) - a great waterproof map.
- \* Trout Streams of Georgia, Ga. Dept. of Natural Resources, Wildlife Resources Division (770/918-6400) - free.
- \* Chattahoochee River National Recreation Area map (Buford Dam to Atlanta) - a great map, available free at the National Park Service office at Island Ford (near Ga 400 and the river) or by phone (770/399-8070)
- \* County road maps, Georgia DOT (404/656-5336).
- \* USGS (and other) Map dealers:
- \* REI, Atlanta (404/633-6508) and Dunwoody (770/901-9200)
- \* Blue Ridge Mountain Sports, Atlanta (404/266-8372)
- \* Georgia Geologic Survey, Atlanta (404/656-3214)
- \* Wickham's Outdoor World, Columbus
- \* Applied Images, Gainesville (770/718-1897)
- \* USGS (800/872-6277 or [www.usgs.gov](http://www.usgs.gov)) ☺



# Georgia Watersheds



Legend:

- State Border
- HUC

